



16.01.2018

LTS Technology News 2018-01

Overview

1.	Encrypted data transmission - https	2
2.	New information on accommodation and gastronomy establishments	3
3.	Lifts	3
4.	Slopes.....	3
5.	Weather/snow situation: Weather forecast and measurement points.....	4
6.	Webcams	4
7.	Short description and evaluation of barrier-free accommodation establishments	4
8.	Activities: no longer supported EnumCodes removed	4
9.	Gastronomy: opening hours	4
10.	Replicating gastronomy data	4
11.	Gastronomyfinder: print function.....	5
12.	POIfinder extensions.....	5
13.	Keywords	6



In this issue of LTS Technology News, we once again want to inform you about the latest topics and terms. If you have further questions, please contact the LTS Service Desk (ticket@LTS.it) by e-mail.

1. Encrypted data transmission - https

The LTS has been working for some time to convert all systems to use the encrypted data transmission https. At the same time, all interfaces are being converted to new Load Balance Servers to boost performance and availability.

The widgets are now available under new domains:

Widget	Previous URL (HTTP)	New URL (HTTPS)
Hotelfinder	http://hotelfinder.lts.it/	https://widget.lts.it/hotelfinder/
Packagefinder	http://tourist.bz.it/packagefinder/	https://widget.lts.it/packagefinder/
Gastronomyfinder	http://tourist.bz.it/gastronomyfinder/	https://widget.lts.it/gastronomyfinder/
Eventfinder	http://tourist.bz.it/eventfinder/	https://widget.lts.it/eventfinder/
POIfinder	http://tic.lts.it/ticweb/apFinder/	https://widget.lts.it/poifinder/
Catalogue Requests	http://tourist.bz.it/cataloge-request/	https://widget.lts.it/cataloge-request/
Booking	http://lcs.tourist.bz.it/booking/	https://widget.lts.it/booking/

Please note that the previous URLs must be considered **deprecated**, and will be deactivated from **1st June 2018** on.

The interfaces are available under new domains as well:

Interface	Previous URL (HTTPS)	New URL (HTTPS)
API	https://lcs.tourist.bz.it/api/	https://lcs.lts.it/api/
WSECURE	https://tourist.bz.it/wsecure/	https://lcs.lts.it/wsecure/
DATA	https://tourist.bz.it/data/	https://lcs.lts.it/data/
DOCSEVER	https://tourist.bz.it/docserver/	https://doc.lts.it/docserver/
DOCSITE	https://tourist.bz.it/docsite/	https://doc.lts.it/docsite/

Please note that the previous URLs must be considered **deprecated**, and will be deactivated from **1st September 2018** on.

As part of this transition, the LTS servers will no longer support older transfer protocols. We recommend the TLS 1.2 protocol and a current, secure encryption method (Cipher Suite).



2. New information on accommodation and gastronomy establishments

We expanded the features for accommodation providers and the gastronomy sector. Below you find a list of the new features. The classifications are relevant for anyone who included search filters for the accommodation or the gastronomy sector based on the features.

Accommodation providers:

- Free Wi-Fi
- Bike Friendly
- Charging Point for EV
- Non-smokers' room
- Non-smoking apartment
- Washing machine in the apartment

Gastronomy sector:

- Free Wi-Fi
- Bank card/Maestro
- Baby animals/petting zoo
- Playground
- Playroom

3. Lifts

The **lifts** were expanded with the following information:

- Lift type: Train, Skibus, one- person- chairlift
- Points for ascend and descend
- Bike transport possible

4. Slopes

Slopes were expanded with information on the **snow type**. This information is particularly important in winters with little snow.

The new keyword **“Circular route”** allows circuits like the Sellaronda to be included.

The new keyword **“Snowpark”** allows snowparks to be included. The following additional information was defined for snowparks:

- Inground Features
- Boardercross
- Pipes
- Artificially snowed
- Number of jibs
- Jumps (number of easy, medium, difficult jumps)
- Lines (number of easy, medium, difficult lines)



To show slopes on digital maps, the corresponding shape files can now be read out. Shape files allow the slopes to be shown as surfaces, not just as lines as before.

5. Weather/snow situation: Weather forecast and measurement points

Where allocated, for measurement points there are available weather forecasts, too. If you use the data, please consider the corresponding copyright information.

6. Webcams

As incorporating non-encrypted data in encrypted websites leads to problems, LTS will only output encrypted URLs for webcams in the near future. However, as non-encrypted URLs are currently also output, we ask you to take this fact into account when outputting data.

7. Short description and evaluation of barrier-free accommodation establishments

Since 2017, LTS also provides additional information on barrier-free accommodation establishments. The classification (1 to 5 smileys) and a general company description are taken from Independent.

This data can be accessed via the LCS interface *IndependentData*, see the corresponding interface documentation. If you use this data, please consider the corresponding copyright information.

8. Activities: no longer supported EnumCodes removed

For activities and POIs, no longer supported EnumCodes were removed. Please note the remaining, but no longer supported classifications for the level of difficulty.

Note: The difficulty levels have been determined for some time via the *“Rating/@Difficulty”* node. Values 1 and 2 correspond to the color blue, 3 and 4 correspond to red and values 5 and 6 correspond to the color black.

9. Gastronomy: opening hours

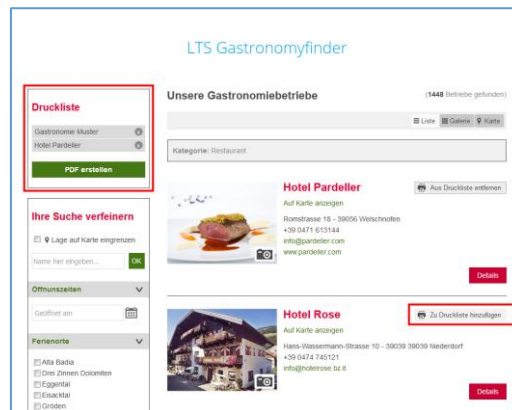
The input screen for the opening hours of gastronomy establishments received a significant upgrade. The opening hours can now be entered more detailed. Please take the new structure into account for the visualization of the opening hours.

10. Replicating gastronomy data

When you open the master data of a hospitality company via the *GastronomicDataDetail* interface, by default the main image is calculated based on the current day. If you want all main images, e.g. in order to replicate the data, you must ensure that the interface outputs all main images. You can achieve this by defining the attribute *ReturnFormat/@AllMainPictures=“1”* in addition to the attribute *ReturnFormat/@MultimediaDescriptions*.

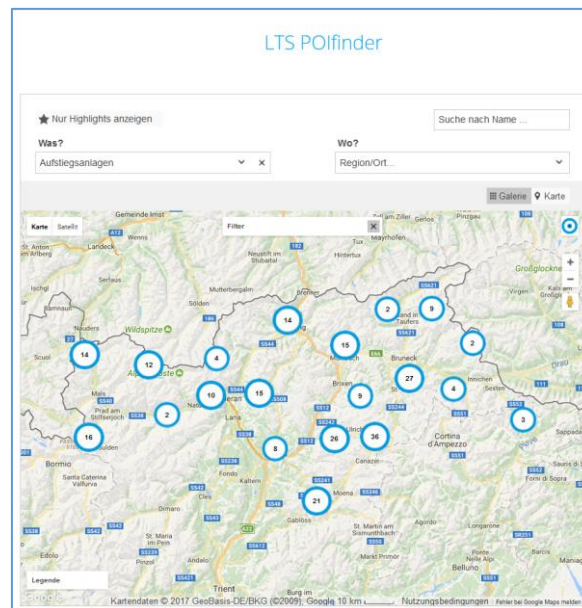
11. Gastronomyfinder: print function


The LTS now offers a comprehensive printing function in the LTS Gastronomyfinder. Required companies can be selected for printing. The user can then use the print function to create a PDF-file with the data of the selected companies.

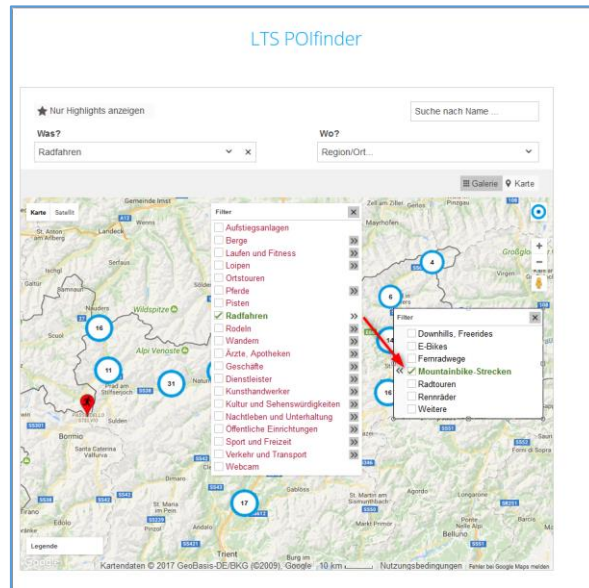


12. POIfinder extensions

As with the other widgets, the *POIfinder* now offers a map view, as well as a selection option for the desired region. This feature is already active without any additional work from your side.



In addition, the map view of the POIfinder can now also be filtered by topic. You do this by setting the flag for the required entries. Click  to refine the search. For example, it can be restricted to mountain bike trails for cycling.



13. Keywords

In recent months on request by the tourism associations, the keywords (classification) for activities and POIs were revised and adapted to the current requirements. Please take the changes in data output into account accordingly.

Hiking - new

- Suitable for prams
- Waalweg paths

Doctors, Pharmacies – new

- Medicines dispensers
- Private clinics, trauma centers, physiotherapists

Public institutions - new

- Hospital

Sports and leisure – new

- Cross-country ski rentals

Sports and leisure – combined

- Canyoning and Riverboarding were combined

Sports and leisure – separated

- Ski schools and Skiclubs were separated (all objects were left as ski schools)
- Bathing lakes and Kneipp facilities were separated (all object were left as bathing lakes)



Sports and leisure – new

- Cross-country ski school
- Cross-country skiing centre

Traffic and transport – new

- Carsharing
- Gas stations Methane (gas)
- Gas stations LPG
- Gas stations Hydrogen
- Electric charging stations

Traffic and transport – renamed

- Gas stations was renamed Gas stations petrol/diesel

Culture and sights - renamed

- Nature reserves were renamed Nature reserves, National Park Centre

Culture and sights - separated

- Viewpoints und Mystical sites were separated (all objects were left as Viewpoints)
- Historical buildings and Historical squares were separated in:
 - Historical buildings
 - Historical squares

Historical buildings were allocated the following sub-categories

- Castles
- Forts
- Raised hides (all object were left as raised hides)
- Ruins

Shops – new

- Bread and baked goods

Superordinate category Shops and service providers – separated

- Shops
- Service providers
- Craft

Shops – new

- Kids fashion
- Cars and motors (also available for service providers)
- Construction sector, trade (also available for service providers)
- Cleanings (also available for service providers)

Shops - renamend

- Renamed production facilities in Production facilities, farm shops



Service providers/ Beauty and Wellness – new

- Day Spa/Sauna
- Kneipp baths

Service providers – renamed

- Renamed Media in Advertising and graphics
- Renamed Construction sector in construction sector, trade

Craft – new

- Sculptor
- Weaving mill arts
- Quill embroidery
- Artist and gilder

Yours sincerely,
the LTS Team

You received this newsletter because you are a member of LTS or your e-mail address was registered on www.lts.it/partner.
If you no longer want to receive this newsletter, please send a brief e-mail to ticket@LTS.it.